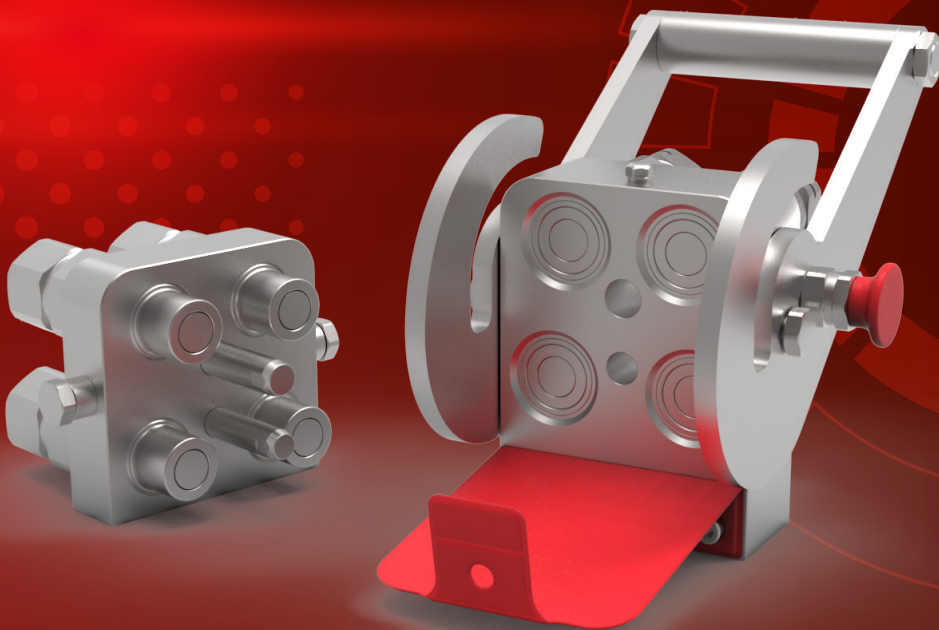


Q.Safe

MULTICONNECTOR



FLAT FACE MULTICONNECTOR SOLUTIONS



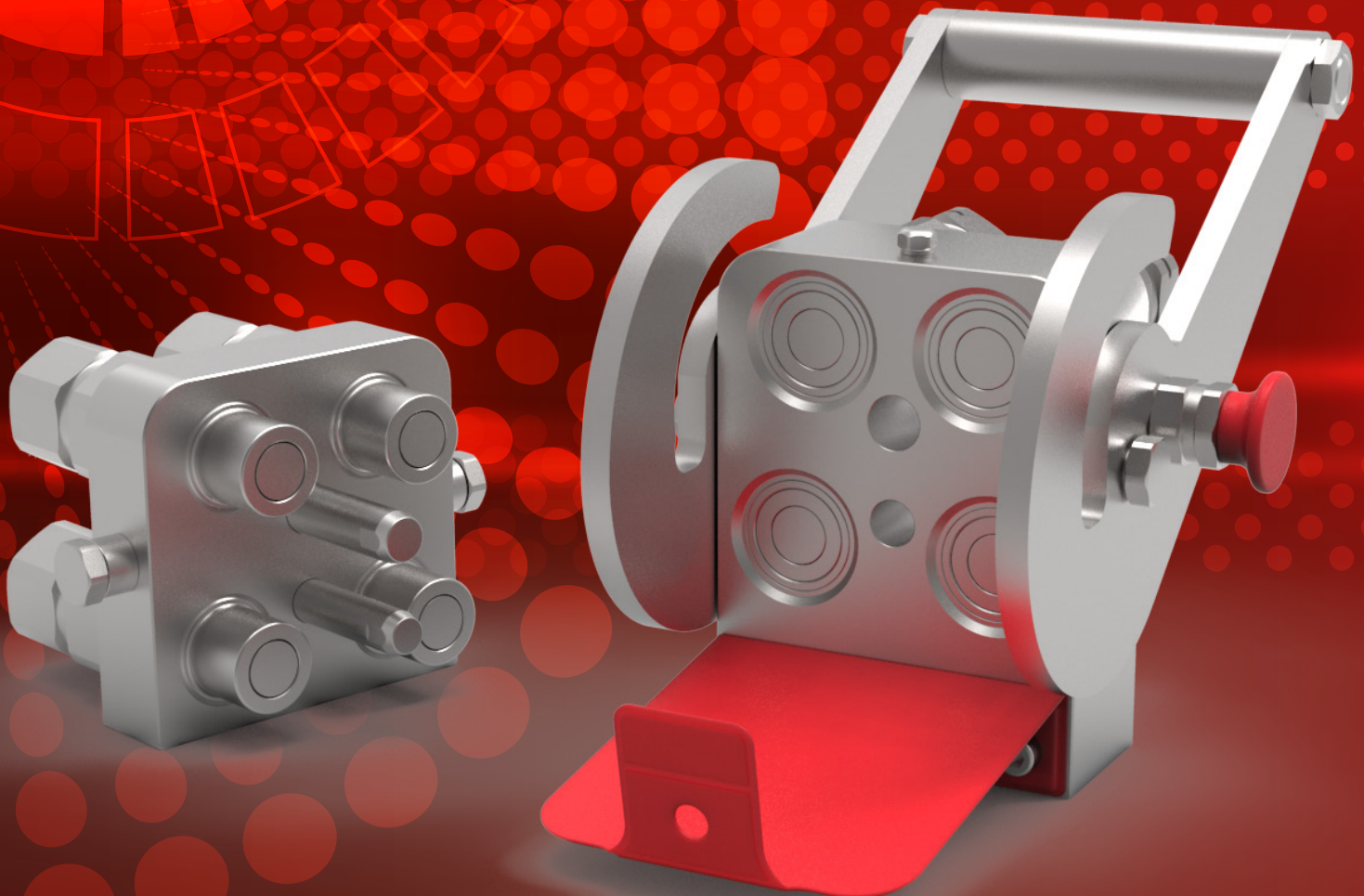
IMPROVED CONNECTION EFFICIENCY...

The Q.Safe quick coupling range from Manuli Hydraulics is widely renowned for representing the Gold Standard in quick coupling quality and performance. The introduction of the Q.Safe Flat Face Multiconnector range combines this superior performance with the added efficiency and safety related benefits of a multiconnector block system.

Q.SAFE MULTICONNECTOR BENEFITS:

- Reduces connection time when multiple connectors are used
- No risk of incorrect connection
- No misalignment between mobile and static blocks
- Compact design for minimal added weight
- Flat face couplings allow high pressures (350 bar) and high flow rates
- Easy to clean
- Universally interchangeable according to ISO 16028
- Industry leading performance with reduced pressure drop
- Almost zero (between 0.007cc and 0.009cc) oil spillage on connection / disconnection
- Connection under residual pressure
- Allows hoses to be arranged closer together whilst still allowing easy access

... SUPERIOR COUPLING PERFORMANCE



THE MANULI ADVANTAGE

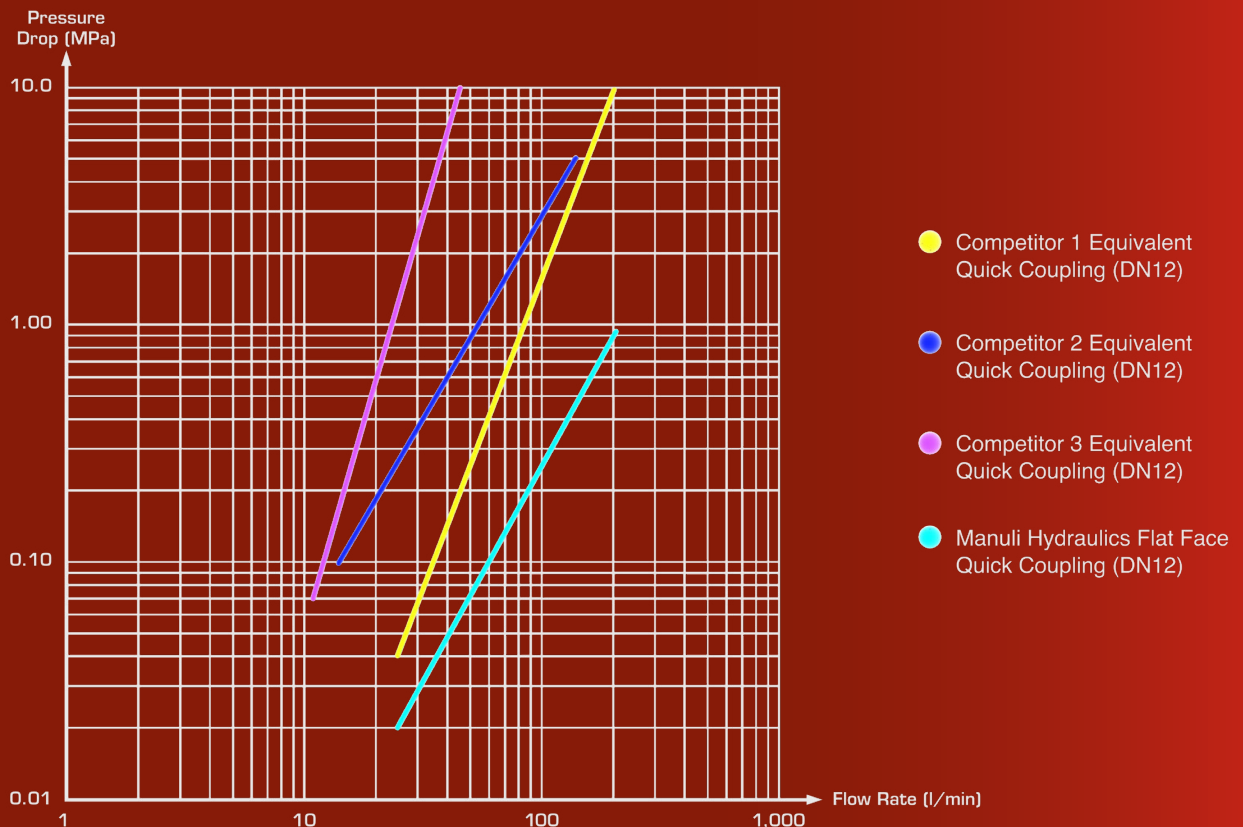
Precision engineered and manufactured to the highest standards, the Q.Safe range of flat-face quick couplings are regarded as the “product-to-beat” thanks to the unique inner profile which minimises pressure drop across the coupling.

The Q.Safe Flat Face Multiconnector series uses this same inner profile design, making it the most energy efficient multiconnector product available.



Q.Safe

PRESSURE DROP VS. FLOW RATE



AS EASY AS 1... 2... 3...

Mobile Block

Static Block

1

2

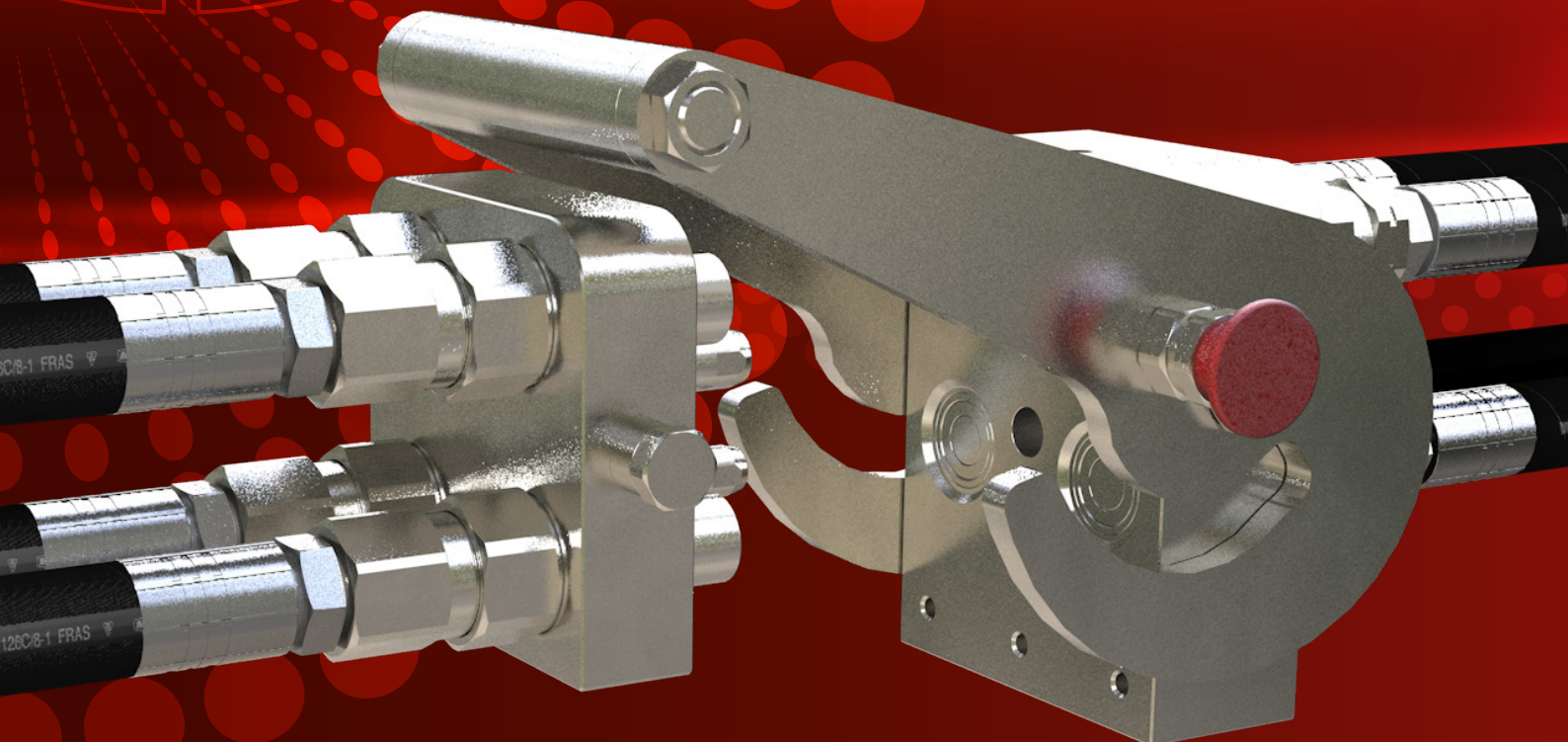
3

The simple, robust design of the Q.Safe Multiconnector means that connecting up to 8 individual couplings couldn't be easier.

Simply position the mobile block so that the couplings sit against the face of the static block. The extended pins will slide into the mating holes to ensure perfect alignment.

Pull out the red locking pin to allow the handle to move.

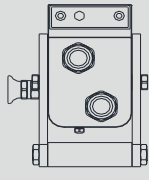
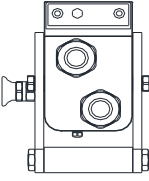
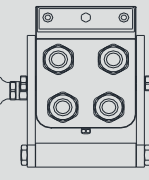
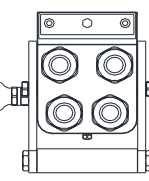
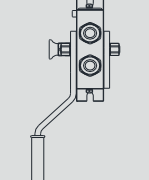
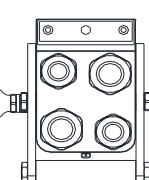
Move the handle in the direction shown to pull the mobile block towards the static block, making the connection with the couplings. The red pin will pop back in when the connection is complete, effectively locking the two parts together.

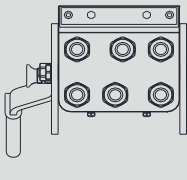
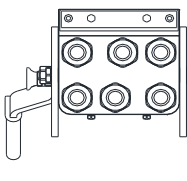
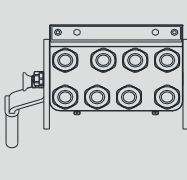
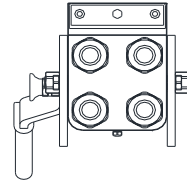
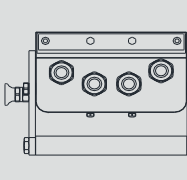


TECHNICAL DATA

SIZE			WORKING PRESSURE CONNECTED [Dynamic]		WORKING PRESSURE DISCONNECTED [Dynamic]		RATED FLOW at 0.2 MPa of pressure drop		OIL SPILLAGE Connection/ Disconnection		MINIMUM BURST PRESSURE						CONNECTION/ DISCONNECTION UNDER PRESSURE
			MPa	PSI	MPa	PSI	l/min	US GPM	cc.	cubic inch	Male		Female		M & F		
DN	inch	Dash	MPa	PSI	MPa	PSI	l/min	US GPM	cc.	cubic inch	MPa	PSI	MPa	PSI	MPa	PSI	
10	3/8"	06	35	5,075	35	5075	44	11.6	0.007	0.0004	170	24,650	140	20,300	180	26,100	Allowed
12.5	1/2"	08	35	5,075	35	5075	76	20.1	0.008	0.0005	170	24,650	140	20,300	180	26,100	Allowed
19	3/4"	12	35	5,075	35	5075	129	34.1	0.009	0.0005	140	20,300	140	20,300	160	23,200	Allowed
25	1"	16	35	5,075	35	5075	172	45.4	0.02	0.0012	160	23,200	150	21,750	160	23,200	Allowed

The rated flow represents the normal operating condition. The maximum recommended flow rate is equal to 1.5 times the rated flow

MULTI-COUPLING SERIES	CONFIGURATION	NO. OF LINES	SIZE		
			DN	inch	Dash
Q401		2	10	3/8"	-06
Q402		2	12.5	1/2"	-08
Q403		4	10	3/8"	-06
Q404		4	12.5	1/2"	-08
Q405		2	10	3/8"	-06
Q406		2	12.5	1/2"	-08
		2	19	3/4"	-12

MULTI-COUPLING SERIES	CONFIGURATION	NO. OF LINES	SIZE		
			DN	inch	Dash
Q407		6	10	3/8"	-06
Q408		6	12.5	1/2"	-08
Q409		8	12.5	1/2"	-08
Q410		4	12.5	1/2"	-08
Q411		4	10	3/8"	-06



www.manuli-hydraulics.com/hp-hydraulics



Global Marketing Office
Email: marketing@manuli-hydraulics.com

© Copyright 2021 Manuli Hydraulics. All rights reserved.
All product names are either trademarks or registered trademarks of
Manuli Hydraulics or Manuli Rubber Industries unless otherwise stated.