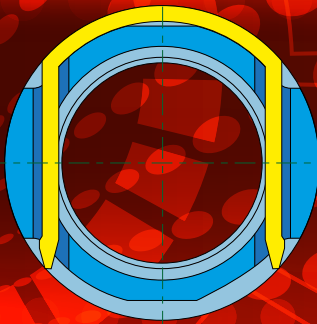
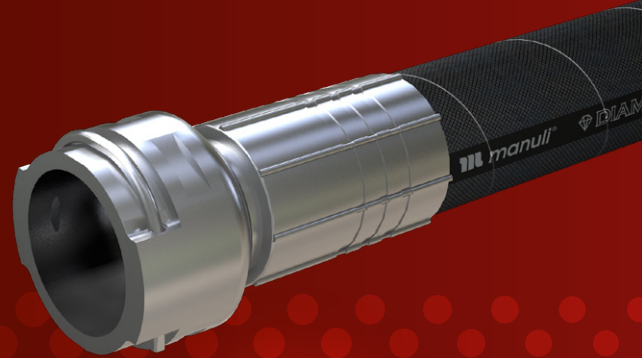


The Manuli Hydraulics range of Flushfit connectors provides a unique solution where the staple is located within the envelope of the assembly.

This sleek design enables a more compact and efficient means of making hydraulic connections and installing hose pressure lines, whilst actively minimising the risk of hose abrasion due to contact with the staple.



Cross-section of a Flushfit fitting with staple in-situ

KEY BENEFITS

- Increased strength and performance
- Snag-free profile
- Minimises hose damage and abrasion
- Large bore XXL size range
- Reduces handling / installation time

| | Range | Dash | Inches | DN | W.P. (bar) | W.P. (psi) |
|-------------------------------|---|------|--------|-----|------------|------------|
| Low Pressure Return Lines | SA Flushfit (SAF) | 16 | 1 | 25 | 350 | 5,000 |
| | | 24 | 1½ | 38 | 185 | 2,683 |
| | | 32 | 2 | 51 | 112 | 1,624 |
| | | 40 | 2½ | 63 | 140 | 2,030 |
| | SA Flushfit PLUS (SAFP) | 48 | 3 | 76 | 105 | 1,523 |
| | | 56 | 3½ | 89 | 105 | 1,523 |
| SA Flushfit PLUS XTRA (SAFPX) | 48 | 3 | 76 | 140 | 2,030 | |
| High Pressure Feed Lines | SH Flushfit & Sliderlock (SHF & SLH) | 24 | 1½ | 38 | 420 | 6,000 |
| | | 32 | 2 | 51 | 420 | 6,000 |
| | | 40 | 2½ | 63 | 350 | 5,000 |
| | | 48 | 3 | 76 | 350 | 5,000 |