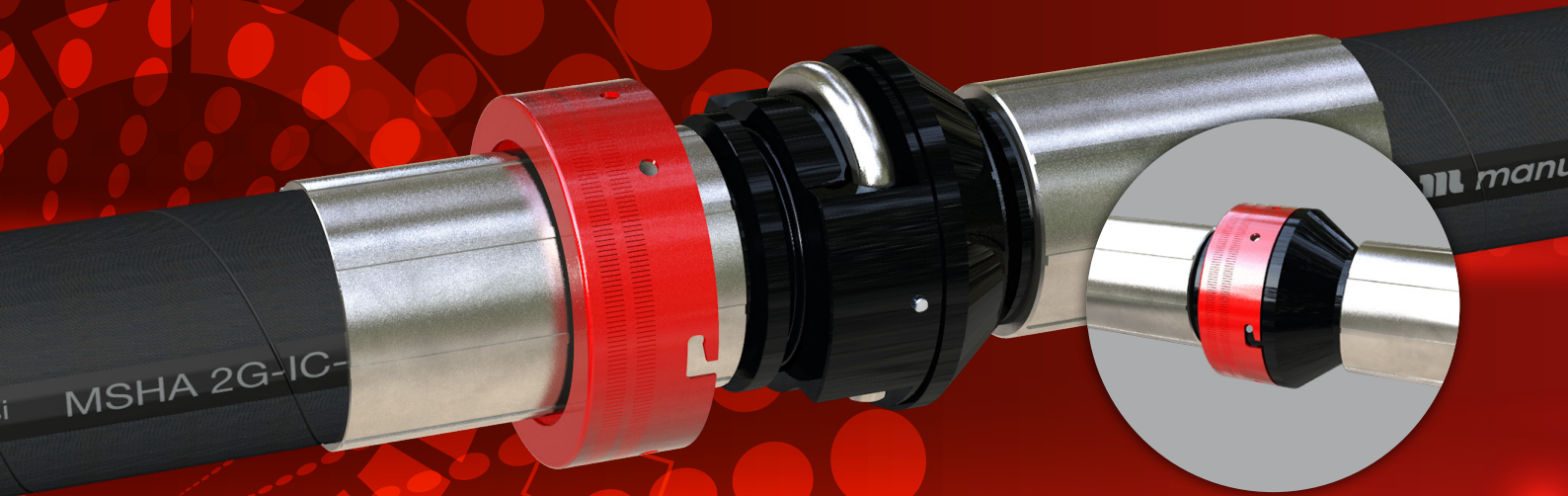


Manuli Hydraulics is proud to introduce Sliderlock, a new concept to ensure staple lock hose connection integrity.

The spring loaded cover ensures that the staple is fully retained, even under the harshest of conditions. This unique feature enhances the staple lock design which has been in use in underground mining applications for over 50 years.



Sliderlock cover in "Locked" position

KEY BENEFITS

- Enhanced safety and performance
- Ensures full staple retention
- Inspection holes allow visual staple check
- Innovative design actively prevents cover disengagement during service
- Cover minimises dust ingress
- Compact, snag-free design
- The safety cover always remains on the hose
- Knurled finish for easy twist-and-click connection
- Red colour identifies high pressure lines

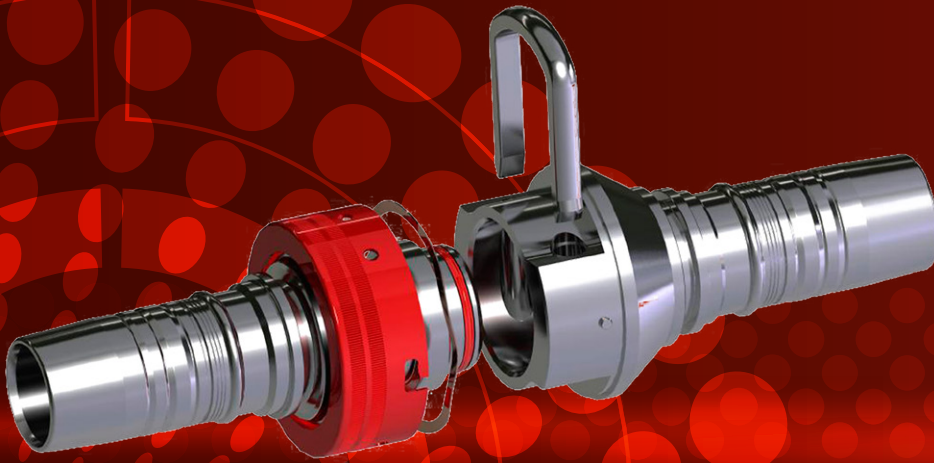
| Part No. | Dash | Inches | DN | O.D. (mm) | W.P. (bar) | Impulse Cycles |
|----------|------|--------|----|-----------|------------|----------------|
| * SLH-24 | 24 | 1½ | 38 | 92 | 420 | 1,000,000 |
| * SLH-32 | 32 | 2 | 51 | 107 | 420 | 1,000,000 |
| * SLH-40 | 40 | 2½ | 63 | 122 | 350 | 1,000,000 |
| * SLH-48 | 48 | 3 | 76 | 152 | 350 | 1,000,000 |

** fully interchangeable with SH & SHF series staple male ends*

Sliderlock design is also available on SAF, SAFF, SAFFPX and SHF product ranges

SLIDERLOCK OEM COMPONENTS

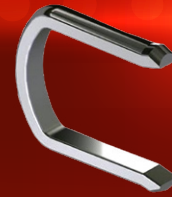
All the components you need to use Sliderlock in your OEM operations.



SLHC SERIES
Safety Cover



SLHWS SERIES
Wave Spring



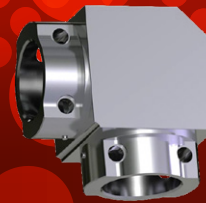
SLH08D SERIES
"D"-Staple

SLIDERLOCK ADAPTORS

Manuli Hydraulics offers a wide range of adaptors designed to compliment the Sliderlock product range.



SLH01 SERIES
Straight Female Adaptor



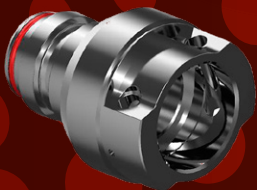
SLH02 SERIES
90° Female Adaptor



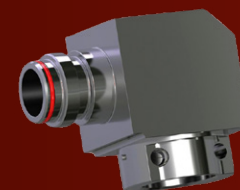
SLH03 SERIES
T-Piece Female Adaptor



SLH06 SERIES
Female End Cap



SLH31 SERIES
Straight Male - Female Adaptor



SLH32 SERIES
90° Male - Female Adaptor



Unit 8 - Block 5, Shenstone Trading Est.
Bromsgrove Rd, Halesowen, B63 3XB
Phone: +44 (0)121 504 9040
Fax: +44 (0)121 585 7969
Email: info@manuli-hydraulics.com