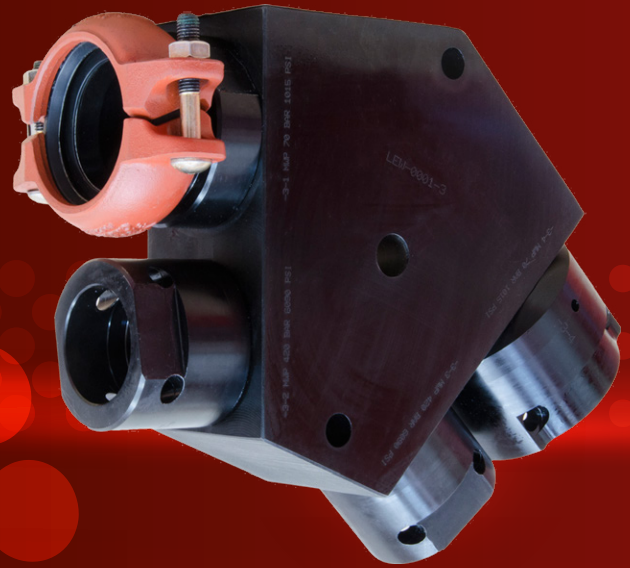


Manifolds are used to distribute fluid through a hydraulic circuit, whilst improving system design by offering multiple connections through a single block.

Manuli Hydraulics design and manufacture both low- and high-pressure hydraulic manifolds to customers' unique specifications. Manifolds can be produced in numerous different configurations and compliment the Manuli XXL hose range typically used in applications such as monorail systems.

The constant requirement for increased output and greater productivity drive continuous improvement and innovation in this custom made range of speciality products.



KEY BENEFITS

- Minimises leak paths
- Reduces hose stress on monorail systems
- Reduces the number of connections
- Compact design for both low- and high-pressure applications
- 100% pressure tested and certified
- Simplifies hose installation and system design
- Designs accommodate multiple industry standard porting options

